



PARKPRO
TEK Cloud-Based Inspections
and Maintenance

Cedar Park

08/07/2023
09:41 AM



General Information

Company Name: Inframark

Property Manager: Makenzie Scales

Address: 2900 El Salido Parkway Cedar Park, Texas 78613

Email:

Phone Number: (713) 594-6335

Inspection by: Dustin Beber

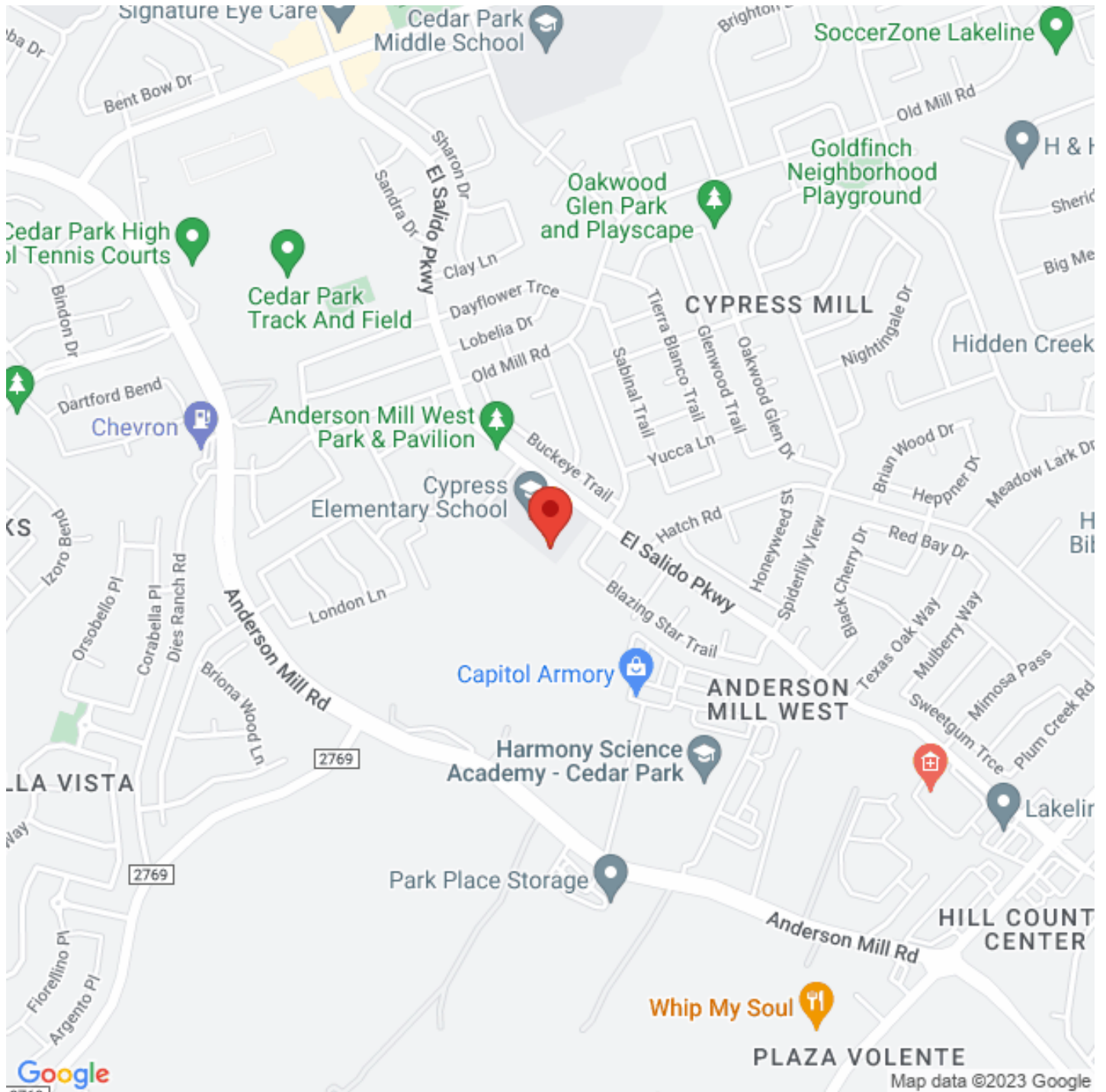


Table of Contents

Playground Location

Priority Glossary

Inspector Checklist

1: Playground Area- Anderson Mill West Park

1.1: General Playground Concerns

1.2: Age / Size Appropriateness Design

1.3: Playground Protective Surface

1.4: Slides

1.5: Climbing Equipment

1.6: Rotating and Rocking Equipment

1.7: Use Zone

1.8: Swings

2: Playground Area

2.1: General Playground Concerns

2.2: Age / Size Appropriateness Design

2.3: Playground Protective Surface

2.4: Slides

2.5: Climbing Equipment

2.6: Swings

2.7: Rotating and Rocking Equipment

2.8: Use Zone

3: Tennis Court

3.1: General

4: Basketball Court

4.1: General

5: Volleyball Court

5.1: General

6: Playground Area – Lakeline Oak Park

6.1: General Playground Concerns

6.2: Age / Size Appropriateness Design

6.3: Climbing Equipment

6.4: Playground Protective Surface

6.5: Rotating and Rocking Equipment

6.6: Slides

6.7: Swings

6.8: Use Zone

7: Playground Area

7.1: General Playground Concerns

7.2: Age / Size Appropriateness Design

7.3: Climbing Equipment

7.4: Playground Protective Surface

7.5: Slides

7.6: Swings

7.7: Use Zone

8: Playground Area – Volente Hills Park

8.1: General Playground Concerns

8.2: Age / Size Appropriateness Design

8.3: Climbing Equipment

8.4: Playground Protective Surface

8.5: Slides

8.6: Swings

8.7: Use Zone

9: Playground Area

9.1: General Playground Concerns

9.2: Age / Size Appropriateness Design

9.3: Climbing Equipment

9.4: Playground Protective Surface

9.5: Slides

9.6: Use Zone

10: Playground Area - Sun Chase

10.1: General Playground Concerns

10.2: Age / Size Appropriateness Design

10.3: Playground Protective Surface

10.4: Slides

10.5: Use Zone

11: Playground Area - Madeline Loop Pond

11.1: General Playground Concerns

12: Playground Area - Hatch Pond Park

12.1: General Playground Concerns

12.2: Age / Size Appropriateness Design

12.3: Climbing Equipment

12.4: Playground Protective Surface

12.5: Use Zone

12.6: Swings

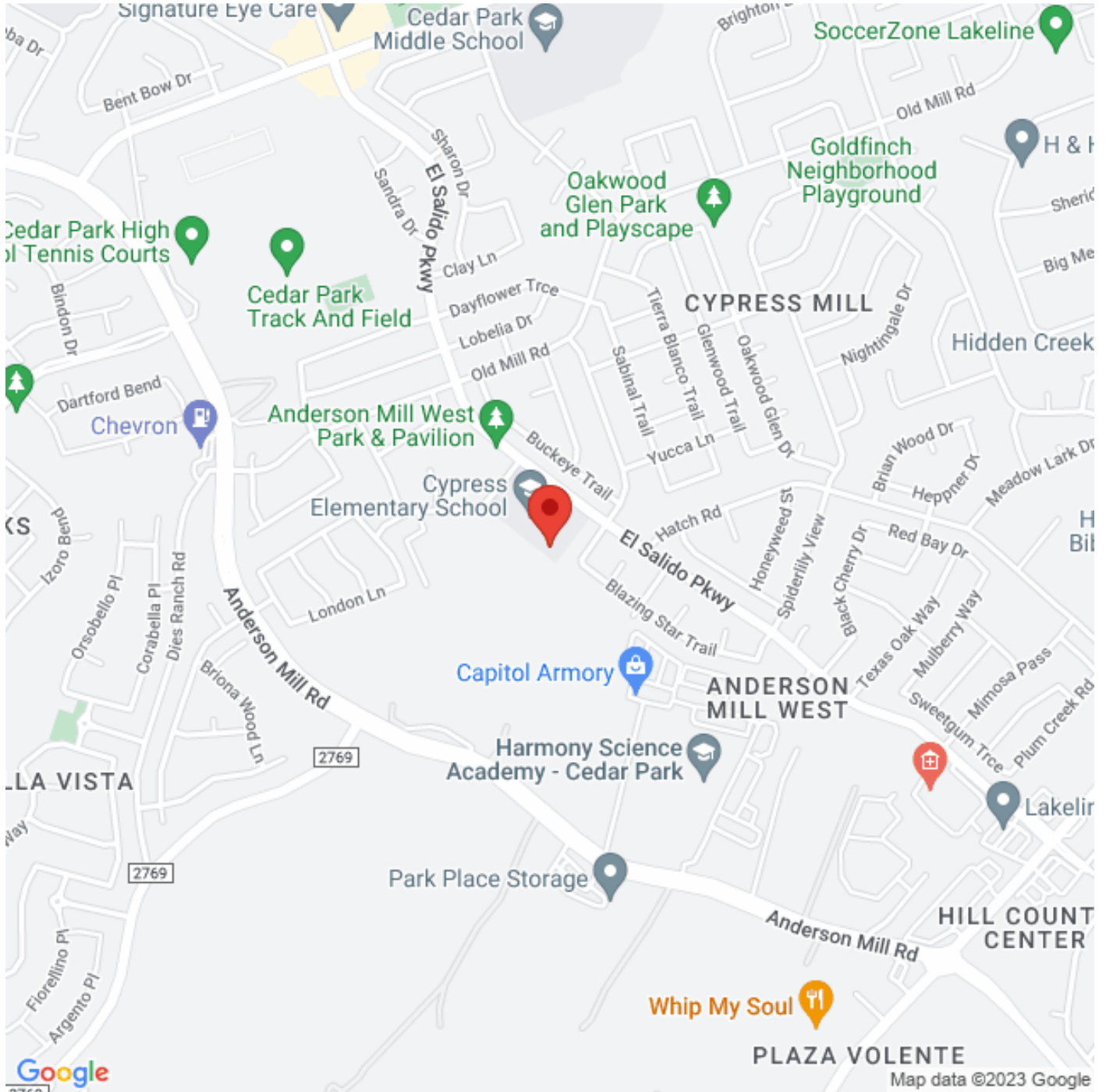
13: Playground Area - Anderson Mill Pond Park

13.1: Swings

Summary

Notes

Playground Location



Priority Glossary

- One:** Non-compliant safety concern that may result in permanent disability, loss of life or body part. Condition should be corrected immediately.
- Two:** Non-compliant safety concern that may result in temporary disability. Condition should be corrected as soon as possible.
- Three:** Non-compliant safety concern that is likely to cause a minor (non-disabling) injury. Condition should be corrected when time permits.
- Four:** Non-compliant safety concern whose potential to cause an injury is very minimal. Condition should be corrected if it worsens.
- Five:** The item has been determined to be compliant with the owner/operator's operating policy and standard of care. Continued ongoing preventive maintenance is recommended.

Inspector Checklist

Walked all areas included on the report for any non-compliant issues and provided detailed documentation

1: Playground Area- Anderson Mill West Park

1.1: General Playground Concerns

- Compliant 1.1.1. The playground can be accessed safely by a sidewalk that is free of standing water, sand, pea gravel and low (7'-0" minimum) hanging branches.



- Compliant 1.1.2. Playground has only manufacturer approved parts and pieces unless specifically documented by original manufacturer.

Non-Compliant 1.1.3. If needed, suitable barrier (fence) is provided for border concerns within 200' of playground edge

*This is a priority Four issue. (Non-compliant safety concern whose potential to cause an injury is very minimal. Condition should be corrected if it worsens.)
Playground is at 192'*

F2049 - 8.3 - Level III the hazard is over 100 ft up to 200 ft from play equipment or its use zone



Compliant 1.1.4. Signs give information about regulations on the use of the playground (hours, pets, specific rules, etc.), name & phone number of playground owner (to report problems). Age appropriateness of equipment. (CPSC 2.2.6)



Recommended 1.1.5. Signs on all bordering roads advise motorists that a playground is nearby.

Compliant 1.1.6. Poisonous plants are removed from the play area.

Compliant 1.1.7. The play area is free of inappropriate materials or chemicals.

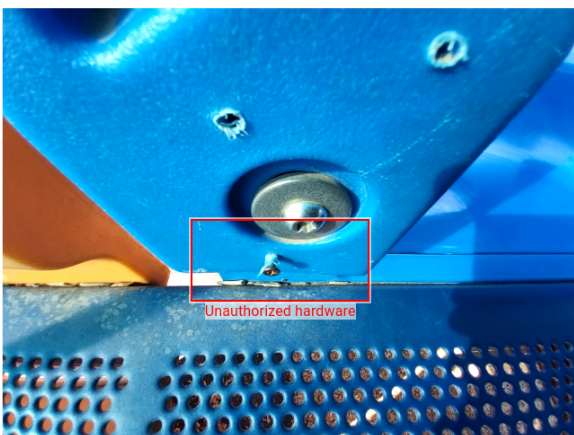
Compliant 1.1.8. The play area is visible to deter inappropriate behavior. (CPSC 2.2.5)

Compliant 1.1.9. Crush and shear points: (CSPS 3.1, ASTM 6.2). Equipment is free of sharp edges. There are no open holes in equipment forming traps (e.g. at the ends of tubes). There are no pinch, crush or shear points.

Non-Compliant 1.1.10. Entanglement / entrapment angles (CPSC 3.2, ASTM 6.4): No more than two threads of the fastener protrude through any nut. No obstacles for protrusions project upwards from a horizontal plane extending more than 1/8" perpendicular to the plane of the initial surface. There are no open "v" entrapment angles on any part of the equipment. There are no gaps wider than 1.8" that would be cause for an entanglement hazard on any downward sloping play equipment.

*This is a priority Three issue. (Non-compliant safety concern that is likely to cause a minor (non-disabling) injury. Condition should be corrected when time permits.)
Non-compliant hardware on blue slide*

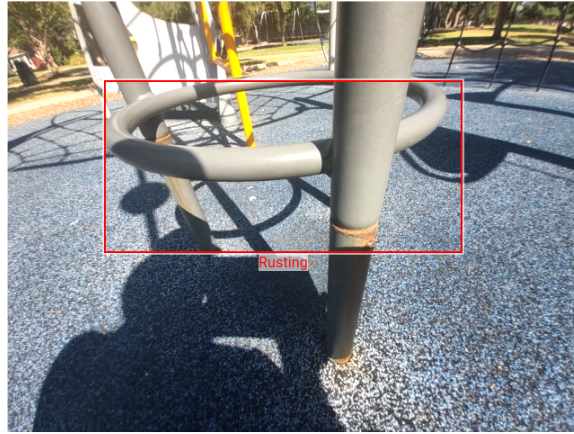
ASTM - 6.4 - There shall be no entanglement hazards on public play equipment.



Non-Compliant 1.1.11. Hardware: Nuts and bolts are tight and not able to be loosened without tools. Upon close inspection, they show no loose play or excessive wear (CPSC 2.5.2). Equipment is free of rust and chipping paint. Equipment is free of sharp no loose play or excessive wear (CPSC 2.5.2). Equipment is free of rust and chipping paint. Equipment is free of sharp edges, splinters or rough surfaces and show no excessive wear. Ropes, chains, and cables have not frayed or worn out. Equipment has not shifted or become bent. There is no corrosion or visible rotting at points where equipment comes into contact with ground surface (CPSC 7.2, 8.1) No components are missing. All parts of the equipment are present and in good working order with no loose play or excessive wear in moving parts. (CPSC 7.2, 8.1) Hanggrips are between 0.95" and 1.55" in diameter. (CPSC 10.2.1) Footings for equipment are stable and buried below ground level or covered by surfacing materials, (CPSC 9.7) Equipment is free of any litter or debris (CPSC 7.2)

*This is a priority Two issue. (Non-compliant safety concern that may result in temporary disability. Condition should be corrected as soon as possible.)
Rusting and peeling decks, missing equipment, missing caps*



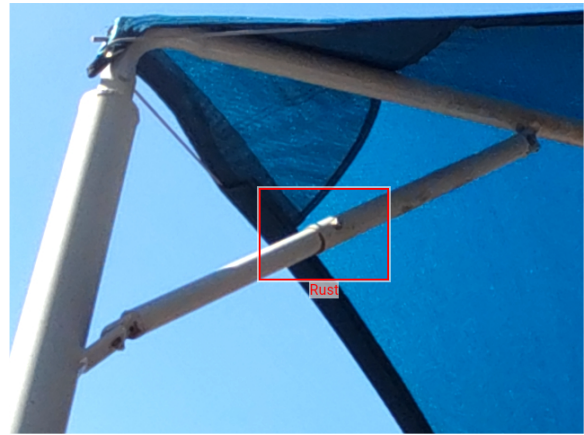


Compliant

1.1.12. Protrusions: (CPSC 3.2, ASTM 6.3). No components fail protrusion test. Nuts, bolts and screws are recessed, covered or sanded smooth and level.

Compliant

1.1.13. Is shade provided over the playground area?



Compliant

1.1.14. The height of transfer platforms is between 11"-18"

Height at 13.5"



1.2: Age / Size Appropriateness Design

- Compliant** 1.2.1. The play area has signs that inform users of intended user age group. (CPSC 2.2.6).
 DISCLOSURE- Stickers on the unit in place of the sign are acceptable but can be easily removed which is why permanent signs are recommended



1.3: Playground Protective Surface

- Non-Compliant** 1.3.1. All elevated play equipment (slides, swings, bridges, seesaws, climbing apparatus, etc.) has proper depth of impact-absorbing material underneath the structure. Refer to CPSC and ASTM F1487-07 and ASTM 1292-04 for specifications on conforming protective surface type, critical fall heights and how far surfacing should extend from structure.
PARKPRO TEK CANNOT GUARANTEE SURFACING IS COMPLIANT WITHOUT SURFACE IMPACT TESTING WHICH IS HIGHLY RECOMMENDED FOR EVERY SITE

This is a priority One issue. (Non-compliant safety concern that may result in permanent disability, loss of life or body part.

Condition should be corrected immediately.)

Damaged rubber, loose fill at 3"

- CPSC - 2.4.2.2 - Loose-fill material is not an adequate depth and should be refilled to remain compliant**
CPSC - 2.4.2.1 - Rubber surfacing has extensive cracking and missing sections and should be replaced as it is not compliant which is a priority one liability
CPSC - 2.4.2.1 - Rubber surfacing is in need of patch repairs





Recommended 1.3.2. Surfaces are inspected at least monthly and raked to prevent them from becoming packed down and to remove hidden hazards (e.g. litter, sharp objects, animal feces).

Compliant 1.3.3. Standing water is not found within any of the use zones.

Compliant 1.3.4. For Equipment installed after 1995, manufacturers sign attached to equipment stating equipment must be installed over impact absorbing surface . (ASTM 14.4.1.3)

1.4: Slides

Compliant

1.4.1. If the slide is made in several pieces, the slide surface has no gaps or rough edges at the top of the slide or at section seams that could entangle clothing or trap foreign material (CPSC 12.4.3, 12.4.4)



N/A

1.4.2. For slides 4' high or less and designed for 2-5 year olds, the slide exit height does not exceed 11" above the protective surfacing material. (ASTM 8.5.5.3 CPSC 12.4.5)

Compliant

1.4.3. For slides greater than 4' high, designed for 5-12 year olds, the slide exit height is between 7" and 15" above the protective surfacing material. (ASTM 8.5.5.3 CPSC 12.4.5)



Compliant

1.4.4. The slide is free of obstructions throughout the use zone.

Compliant

1.4.5. If the slide is made in one unitary piece, the slide surface has no gaps or rough edges throughout that could entangle clothing or trap foreign material (CPSC 12.4.3, 12.4.4)



1.5: Climbing Equipment

Compliant

1.5.1. Flexible access equipment anchoring devices are below the base of the minimum required depth of the protective surface. (CPSC 12.1.3, ASTM 7.2.2.2)



Compliant

1.5.2. Handrails and handholds stay in place when grasped.





1.6: Rotating and Rocking Equipment

N/A 1.6.1. There is a minimum of 9" between the protective surface and the underside of a merry-go-round platform with a maximum height of 4" for the platform surface. (CPSC 12.2, ASTM 8.8.1.2, 8.8.1.4)

Compliant 1.6.2. There are no accessible shearing or crushing mechanisms in the undercarriage of the equipment, and the platform does not provide an oscillatory (up and down) motion. (CPSC 12.2, ASTM 8.8.1.5)



Compliant 1.6.3. Footrests stay in place and pass the protrusion test. (CPSC 12.5, ASTM 8.11.3)

Compliant 1.6.4. Handholds stay in place when grasped and pass the protrusion test. (CPSC 12.5, ASTM 8.11.2)

1.7: Use Zone

Compliant 1.7.1. The use zone for stationary play equipment shall extend no less than 72 in. (1830 mm) from all sides of the play structure.

Compliant 1.7.2. There shall be a use zone for each play structure which shall consist of obstacle-free surfacing that conforms to Specification F1292 appropriate for the fall height of the equipment.

1.8: Swings

Non-Compliant 1.8.1. Hardware is compliant with no issues present.

This is a priority One issue. (Non-compliant safety concern that may result in permanent disability, loss of life or body part.

Condition should be corrected immediately.)

Missing and incorrectly installed hardware.



Compliant 1.8.2. Swing hangers are spaced wider than seats, not less than 20. (ASTM 8.6.1.5)

Compliant 1.8.3. There are no open "S" hooks (openings greater than or equal to 0.04"). CPSC 5.3.8.1

Non-Compliant 1.8.4. Swing surfacing is in good condition.

This is a priority One issue. (Non-compliant safety concern that may result in permanent disability, loss of life or body part.

Condition should be corrected immediately.)

Loose fill at 0" in many locations



Non-Compliant 1.8.5. Swing seats are in good condition.

This is a priority One issue. (Non-compliant safety concern that may result in permanent disability, loss of life or body part.

Condition should be corrected immediately.)

Damaged and missing hardware. Installed incorrectly creating entanglement

None - null - Strap seat is damaged and should be replaced

None - null - Hardware is damaged and should be replaced



Compliant 1.8.6. Swing hangers are spaced wider than seats, not less than 20". (ASTM 8.6.1.5)

Compliant 1.8.7. Vertical distance is at least 16" between underside of occupied seat and protective surface. (5-12 equipment-ASTM 8.6.2.5)

Compliant 1.8.8. Vertical distance is at least 12" between underside of occupied seat and protective surface (2-5 Equipment-ASTM 8.6.2.5)

Compliant 1.8.9. There are no open "S" hooks (openings greater than or equal to 0.04"). CPSC 5.3.8.1

Compliant 1.8.10. Swings are located away from circulation paths (a distance at least equal to the equipment use zone and an additional safety factor for circulation, with this area free of any obstructions) and near the periphery of the playground.



2: Playground Area

2.1: General Playground Concerns

Compliant 2.1.11. The playground can be accessed safely by a sidewalk that is free of standing water, sand, pea gravel and low (7'-0" minimum) hanging branches.

Compliant 2.1.12. Playground has only manufacturer approved parts and pieces unless specifically documented by original manufacturer.

Non-Compliant 2.1.13. If needed, suitable barrier (fence) is provided for border concerns within 200' of playground edge

This is a priority Two issue. (Non-compliant safety concern that may result in temporary disability. Condition should be corrected as soon as possible.)
82"

F2049 - 8.3 - Level II the hazard is 30 ft up to 100 ft from play equipment or its use zone



Compliant 2.1.14. Signs give information about regulations on the use of the playground (hours, pets, specific rules, etc.), name & phone number of playground owner (to report problems). Age appropriateness of equipment. (CPSC 2.2.6)



Recommended 2.1.15. Signs on all bordering roads advise motorists that a playground is nearby.

Compliant 2.1.16. Poisonous plants are removed from the play area.

Compliant 2.1.17. The play area is free of inappropriate materials or chemicals.

Compliant 2.1.18. The play area is visible to deter inappropriate behavior. (CPSC 2.2.5)

Compliant 2.1.19. Crush and shear points: (CSPS 3.1, ASTM 6.2). Equipment is free of sharp edges. There are no open holes in equipment forming traps (e.g. at the ends of tubes). There are no pinch, crush or shear points.

Compliant 2.1.20. Entanglement / entrapment angles (CPSC 3.2, ASTM 6.4): No more than two threads of the fastener protrude through any nut. No obstacles for protrusions project upwards from a horizontal plane extending more than 1/8" perpendicular to the plane of the initial surface. There are no open "v" entrapment angles on any part of the equipment. There are no gaps wider than 1.8" that would be cause for an entanglement hazard on any downward sloping play equipment.

Non-Compliant 2.1.21. Hardware: Nuts and bolts are tight and not able to be loosened without tools. Upon close inspection, they show no loose play or excessive wear (CPSC 2.5.2). Equipment is free of rust and chipping paint. Equipment is free of sharp no loose play or excessive wear (CPSC 2.5.2). Equipment is free of rust and chipping paint. Equipment is free of sharp edges, splinters or rough surfaces and show no excessive wear. Ropes, chains, and cables have not frayed or worn out. Equipment has not shifted or become bent. There is no corrosion or visible rotting at points where equipment comes into contact with ground surface (CPSC 7.2, 8.1) No components are missing. All parts of the equipment are present and in good working order with no loose play or excessive wear in moving parts. (CPSC 7.2, 8.1) Hanggrips are between 0.95" and 1.55" in diameter. (CPSC 10.2.1) Footings for equipment are stable and buried below ground level or covered by surfacing materials, (CPSC 9.7) Equipment is free of any litter or debris (CSPC 7.2)

*This is a priority Three issue. (Non-compliant safety concern that is likely to cause a minor (non-disabling) injury. Condition should be corrected when time permits.)
Pinch points on rubber flex climber. Missing equipment.*



Compliant 2.1.22. Protrusions: (CPSC 3.2, ASTM 6.3). No components fail protrusion test. Nuts, bolts and screws are recessed, covered or sanded smooth and level.

Compliant 2.1.23. Is shade provided over the playground area?



Compliant 2.1.24. The height of transfer platforms is between 11" -18"



2.2: Age / Size Appropriateness Design

Compliant

2.2.1. The play area has signs that inform users of intended user age group. (CPSC 2.2.6).
 DISCLOSURE- Stickers on the unit in place of the sign are acceptable but can be easily removed which is why permanent signs are recommended



2.3: Playground Protective Surface

Non-Compliant

2.3.1. All elevated play equipment (slides, swings, bridges, seesaws, climbing apparatus, etc.) has proper depth of impact-absorbing material underneath the structure. Refer to CPSC and ASTM F1487-07 and ASTM 1292-04 for specifications on conforming protective surface type, critical fall heights and how far surfacing should extend from structure.
PARKPRO TEK CANNOT GUARANTEE SURFACING IS COMPLIANT WITHOUT SURFACE IMPACT TESTING WHICH IS HIGHLY RECOMMENDED FOR EVERY SITE

This is a priority One issue. (Non-compliant safety concern that may result in permanent disability, loss of life or body part.

Condition should be corrected immediately.)

Loose fill at 2.75". Rubber surfacing has missing sections

CPSC - 2.4.2.1 - Rubber surfacing has extensive cracking and missing sections and should be replaced as it is not compliant which is a priority one liability

CPSC - 2.4.2.1 - Rubber surfacing is in need of patch repairs

CPSC - 2.4.2.2 - Loose-fill material is not an adequate depth and should be refilled to remain compliant



Recommended 2.3.2. Surfaces are inspected at least monthly and raked to prevent them from becoming packed down and to remove hidden hazards (e.g. litter, sharp objects, animal feces).

Compliant 2.3.3. Standing water is not found within any of the use zones.

N/A 2.3.4. For Equipment installed after 1995, manufacturers sign attached to equipment stating equipment must be installed over impact absorbing surface . (ASTM 14.4.1.3)

2.4: Slides

N/A 2.4.1. If the slide is made in several pieces, the slide surface has no gaps or rough edges at the top of the slide or at section seams that could entangle clothing or trap foreign material (CPSC 12.4.3, 12.4.4)

Compliant 2.4.2. For slides 4 high or less and designed for 2-5 year olds, the slide exit height does not exceed 11" above the protective surfacing material. (ASTM 8.5.5.3 CPSC 12.4.5)



Compliant

2.4.3. For slides greater than 4' high, designed for 5-12 year olds, the slide exit height is between 7" and 15" above the protective surfacing material. (ASTM 8.5.5.3 CPSC 12.4.5)



Compliant

2.4.4. The slide is free of obstructions throughout the use zone.

Compliant

2.4.5. If the slide is made in one unitary piece, the slide surface has no gaps or rough edges throughout that could entangle clothing or trap foreign material (CPSC 12.4.3, 12.4.4)



2.5: Climbing Equipment

Compliant

2.5.1. Flexible access equipment anchoring devices are below the base of the minimum required depth of the protective surface. (CPSC 12.1.3, ASTM 7.2.2.2)



Compliant

2.5.2. Handrails and handholds stay in place when grasped.



2.6: Swings

Non-Compliant 2.6.1. Hardware is compliant with no issues present.

*This is a priority Two issue. (Non-compliant safety concern that may result in temporary disability. Condition should be corrected as soon as possible.)
Damaged sharp edges*



Compliant 2.6.2. Swing hangers are spaced wider than seats, not less than 20. (ASTM 8.6.1.5)

Compliant 2.6.3. There are no open "S" hooks (openings greater than or equal to 0.04"). CPSC 5.3.8.1

Non-Compliant 2.6.4. Swing surfacing is in good condition.

This is a priority One issue. (Non-compliant safety concern that may result in permanent disability, loss of life or body part.

Condition should be corrected immediately.)

Rubber damaged. Loose fill at 4"

CPSC - 2.4.2.1 - Rubber surfacing has extensive cracking and missing sections and should be replaced as it is not compliant which is a priority one liability

CPSC - 2.4.2.1 - Rubber surfacing is in need of patch repairs

CPSC - 2.4.2.2 - Loose-fill material is not an adequate depth and should be refilled to remain compliant



Non-Compliant 2.6.5. Swing seats are in good condition.

This is a priority Three issue. (Non-compliant safety concern that is likely to cause a minor (non-disabling) injury. Condition should be corrected when time permits.)

Bucket seats have rust and sharp edges

None - null - Bucket seat is damaged and should be replaced



Compliant 2.6.6. Swing hangers are spaced wider than seats, not less than 20". (ASTM 8.6.1.5)

N/A 2.6.7. Vertical distance is at least 16" between underside of occupied seat and protective surface. (5-12 equipment-ASTM 8.6.2.5)

Compliant 2.6.8. Vertical distance is at least 12" between underside of occupied seat and protective surface (2-5 Equipment-ASTM 8.6.2.5)



Compliant 2.6.9. There are no open "S" hooks (openings greater than or equal to 0.04"). CPSC 5.3.8.1

Compliant 2.6.10. Swings are located away from circulation paths (a distance at least equal to the equipment use zone and an additional safety factor for circulation, with this area free of any obstructions) and near the periphery of the playground.

2.7: Rotating and Rocking Equipment

N/A

2.7.1. There is a minimum of 9" between the protective surface and the underside of a merry-go-round platform with a maximum height of 4" for the platform surface. (CPSC 12.2, ASTM 8.8.1.2, 8.8.1.4)

Compliant

2.7.2. There are no accessible shearing or crushing mechanisms in the undercarriage of the equipment, and the platform does not provide an oscillatory (up and down) motion. (CPSC 12.2, ASTM 8.8.1.5)



Compliant

2.7.3. Footrests stay in place and pass the protrusion test. (CPSC 12.5, ASTM 8.11.3)

Compliant

2.7.4. Handholds stay in place when grasped and pass the protrusion test. (CPSC 12.5, ASTM 8.11.2)

2.8: Use Zone

Non-Compliant

2.8.1. The use zone for stationary play equipment shall extend no less than 72 in. (1830 mm) from all sides of the play structure.

This is a priority One issue. (Non-compliant safety concern that may result in permanent disability, loss of life or body part.

Condition should be corrected immediately.)

Tree in use zone. Needs to be 13'. Only at 8'



Compliant 2.8.2. There shall be a use zone for each play structure which shall consist of obstacle-free surfacing that conforms to Specification F1292 appropriate for the fall height of the equipment.

3: Tennis Court

3.1: General

Compliant 3.1.3. Are all nets, posts and hardware in good condition?

Compliant 3.1.4. Is windscreen in good condition?

Compliant 3.1.5. Is surfacing in good condition?

4: Basketball Court

4.1: General

N/A 4.1.6. Is windscreen in good condition?

Recommended 4.1.7. Are all nets, rims, backboards and posts in good condition?

Nets are damaged and need to be replaced.

Compliant 4.1.8. Is surfacing in good condition?

5: Volleyball Court

5.1: General

Compliant 5.1.9. Volleyball net is tight and in good condition?

N/A 5.1.10. Watering system is working?

Compliant 5.1.11. Are posts and hardware tight and secured?



Recommended 5.1.12. Sand is level and at a adequate depth?

Overgrown not level



6: Playground Area - Lakeline Oak Park

6.1: General Playground Concerns

Compliant 6.1.13. The playground can be accessed safely by a sidewalk that is free of standing water, sand, pea gravel and low (7'-0" minimum) hanging branches.

Compliant 6.1.14. Playground has only manufacturer approved parts and pieces unless specifically documented by original manufacturer.

Compliant 6.1.15. If needed, suitable barrier (fence) is provided for border concerns within 200' of playground edge

Barrier present.



Compliant

6.1.16. Signs give information about regulations on the use of the playground (hours, pets, specific rules, etc.), name & phone number of playground owner (to report problems). Age appropriateness of equipment. (CPSC 2.2.6)



Recommended

6.1.17. Signs on all bordering roads advise motorists that a playground is nearby.

Compliant

6.1.18. Poisonous plants are removed from the play area.

Compliant

6.1.19. The play area is free of inappropriate materials or chemicals.

Compliant

6.1.20. The play area is visible to deter inappropriate behavior. (CPSC 2.2.5)



Compliant

6.1.21. Crush and shear points: (CSPS 3.1, ASTM 6.2). Equipment is free of sharp edges. There are no open holes in equipment forming traps (e.g. at the ends of tubes). There are no pinch, crush or shear points.

Compliant

6.1.22. Entanglement / entrapment angles (CPSC 3.2, ASTM 6.4): No more than two threads of the fastener protrude through any nut. No obstacles for protrusions project upwards from a horizontal plane extending more than 1/8" perpendicular to the plane of the initial surface. There are no open "v" entrapment angles on any part of the equipment. There are no gaps wider than 1.8" that would be cause for an entanglement hazard on any downward sloping play equipment.

No entanglements present



Recommended 6.1.23. Hardware: Nuts and bolts are tight and not able to be loosened without tools. Upon close inspection, they show no loose play or excessive wear (CPSC 2.5.2). Equipment is free of rust and chipping paint. Equipment is free of sharp no loose play or excessive wear (CPSC 2.5.2). Equipment is free of rust and chipping paint. Equipment is free of sharp edges, splinters or rough surfaces and show no excessive wear. Ropes, chains, and cables have not frayed or worn out. Equipment has not shifted or become bent. There is no corrosion or visible rotting at points where equipment comes into contact with ground surface (CPSC 7.2, 8.1) No components are missing. All parts of the equipment are present and in good working order with no loose play or excessive wear in moving parts. (CPSC 7.2, 8.1) Hanggrips are between 0.95" and 1.55" in diameter. (CPSC 10.2.1) Footings for equipment are stable and buried below ground level or covered by surfacing materials, (CPSC 9.7) Equipment is free of any litter or debris (CSPC 7.2)

Missing pieces on panel



Compliant 6.1.24. Protrusions: (CPSC 3.2, ASTM 6.3). No components fail protrusion test. Nuts, bolts and screws are recessed, covered or sanded smooth and level.

Recommended 6.1.25. Is shade provided over the playground area?

Hole in shade.



Compliant 6.1.26. The height of transfer platforms is between 11" -18"

Height is at 13.5". This is compliant.



6.2: Age / Size Appropriateness Design

Compliant

6.2.1. The play area has signs that inform users of intended user age group. (CPSC 2.2.6).
 DISCLOSURE- Stickers on the unit in place of the sign are acceptable but can be easily removed which is why permanent signs are recommended



6.3: Climbing Equipment

N/A

6.3.1. Flexible access equipment anchoring devices are below the base of the minimum required depth of the protective surface. (CPSC 12.1.3, ASTM 7.2.2.2)

Compliant

6.3.2. Handrails and handholds stay in place when grasped.



6.4: Playground Protective Surface

Non-Compliant 6.4.1. All elevated play equipment (slides, swings, bridges, seesaws, climbing apparatus, etc.) has proper depth of impact-absorbing material underneath the structure. Refer to CPSC and ASTM F1487-07 and ASTM 1292-04 for specifications on conforming protective surface type, critical fall heights and how far surfacing should extend from structure. **PARKPRO TEK CANNOT GUARANTEE SURFACING IS COMPLIANT WITHOUT SURFACE IMPACT TESTING WHICH IS HIGHLY RECOMMENDED FOR EVERY SITE**

This is a priority One issue. (Non-compliant safety concern that may result in permanent disability, loss of life or body part.

Condition should be corrected immediately.)

Rubber damaged. Loose fill at 3"

CPSC - 2.4.2.1 - Rubber surfacing is in need of patch repairs

CPSC - 2.4.2.2 - Loose-fill material is not an adequate depth and should be refilled to remain compliant



Recommended 6.4.2. Surfaces are inspected at least monthly and raked to prevent them from becoming packed down and to remove hidden hazards (e.g. litter, sharp objects, animal feces).

Compliant 6.4.3. Standing water is not found within any of the use zones.

N/A 6.4.4. For Equipment installed after 1995, manufacturers sign attached to equipment stating equipment must be installed over impact absorbing surface . (ASTM 14.4.1.3)

6.5: Rotating and Rocking Equipment

N/A 6.5.1. There is a minimum of 9" between the protective surface and the underside of a merry-go-round platform with a maximum height of 4" for the platform surface. (CPSC 12.2, ASTM 8.8.1.2, 8.8.1.4)

Compliant 6.5.2. There are no accessible shearing or crushing mechanisms in the undercarriage of the equipment, and the platform does not provide an oscillatory (up and down) motion. (CPSC 12.2, ASTM 8.8.1.5)

Compliant 6.5.3. Footrests stay in place and pass the protrusion test. (CPSC 12.5, ASTM 8.11.3)

Compliant 6.5.4. Handholds stay in place when grasped and pass the protrusion test. (CPSC 12.5, ASTM 8.11.2)



6.6: Slides

N/A 6.6.1. If the slide is made in several pieces, the slide surface has no gaps or rough edges at the top of the slide or at section seams that could entangle clothing or trap foreign material (CPSC 12.4.3, 12.4.4)

N/A 6.6.2. For slides 4' high or less and designed for 2-5 year olds, the slide exit height does not exceed 11" above the protective surfacing material. (ASTM 8.5.5.3 CPSC 12.4.5)

Compliant 6.6.3. For slides greater than 4' high, designed for 5-12 year olds, the slide exit height is between 7" and 15" above the protective surfacing material. (ASTM 8.5.5.3 CPSC 12.4.5)



Compliant 6.6.4. The slide is free of obstructions throughout the use zone.

Compliant 6.6.5. If the slide is made in one unitary piece, the slide surface has no gaps or rough edges throughout that could entangle clothing or trap foreign material (CPSC 12.4.3, 12.4.4)



6.7: Swings

Non-Compliant 6.7.1. Hardware is compliant with no issues present.

This is a priority One issue. (Non-compliant safety concern that may result in permanent disability, loss of life or body part.

Condition should be corrected immediately.)

Hangers showing signs of extreme wear and needs replacement.



Compliant 6.7.2. Swing hangers are spaced wider than seats, not less than 20. (ASTM 8.6.1.5)

Compliant 6.7.3. There are no open "S" hooks (openings greater than or equal to 0.04"). CPSC 5.3.8.1

Non-Compliant 6.7.4. Swing surfacing is in good condition.

*This is a priority One issue. (Non-compliant safety concern that may result in permanent disability, loss of life or body part.
Condition should be corrected immediately.)
Loose fill ranges from 2-4" and rubber has cracks*

CPSC - 2.4.2.1 - Rubber surfacing should have a maintenance urethane seal done to ensure longevity of the pad
 CPSC - 2.4.2.2 - Loose-fill material is not an adequate depth and should be refilled to remain compliant
 CPSC - 2.4.2.1 - Rubber surfacing is in need of patch repairs



Compliant 6.7.5. Swing seats are in good condition.

Compliant 6.7.6. Swing hangers are spaced wider than seats, not less than 20". (ASTM 8.6.1.5)

Compliant

6.7.7. Vertical distance is at least 16" between underside of occupied seat and protective surface. (5-12 equipment-ASTM 8.6.2.5)



Compliant

6.7.8. Vertical distance is at least 12" between underside of occupied seat and protective surface (2-5 Equipment-ASTM 8.6.2.5)



Compliant

6.7.9. There are no open "S" hooks (openings greater than or equal to 0.04"). CPSC 5.3.8.1

Compliant

6.7.10. Swings are located away from circulation paths (a distance at least equal to the equipment use zone and an additional safety factor for circulation, with this area free of any obstructions) and near the periphery of the playground.

6.8: Use Zone

Compliant

6.8.1. The use zone for stationary play equipment shall extend no less than 72 in. (1830 mm) from all sides of the play structure.

Compliant

6.8.2. There shall be a use zone for each play structure which shall consist of obstacle-free surfacing that conforms to Specification F1292 appropriate for the fall height of the equipment.

7: Playground Area

7.1: General Playground Concerns

Compliant 7.1.3. The playground can be accessed safely by a sidewalk that is free of standing water, sand, pea gravel and low (7'-0" minimum) hanging branches.



Compliant 7.1.4. Playground has only manufacturer approved parts and pieces unless specifically documented by original manufacturer.

Non-Compliant 7.1.5. If needed, suitable barrier (fence) is provided for border concerns within 200' of playground edge

*This is a priority Three issue. (Non-compliant safety concern that is likely to cause a minor (non-disabling) injury. Condition should be corrected when time permits.)
Road at 155'*

F2049 - 8.3 - Level III the hazard is over 100 ft up to 200 ft from play equipment or its use zone



Compliant 7.1.6. Signs give information about regulations on the use of the playground (hours, pets, specific rules, etc.), name & phone number of playground owner (to report problems). Age appropriateness of equipment. (CPSC 2.2.6)

Recommended 7.1.7. Signs on all bordering roads advise motorists that a playground is nearby.

Compliant 7.1.8. Poisonous plants are removed from the play area.

Compliant 7.1.9. The play area is free of inappropriate materials or chemicals.

Compliant 7.1.10. The play area is visible to deter inappropriate behavior. (CPSC 2.2.5)

Compliant 7.1.11. Crush and shear points: (CSPS 3.1, ASTM 6.2). Equipment is free of sharp edges. There are no open holes in equipment forming traps (e.g. at the ends of tubes). There are no pinch, crush or shear points.

Compliant 7.1.12. Entanglement / entrapment angles (CPSC 3.2, ASTM 6.4): No more than two threads of the fastener protrude through any nut. No obstacles for protrusions project upwards from a horizontal plane extending more than 1/8" perpendicular to the plane of the initial surface. There are no open "v" entrapment angles on any part of the equipment. There are no gaps wider than 1.8" that would be cause for an entanglement hazard on any downward sloping play equipment.



Compliant

7.1.13. Hardware: Nuts and bolts are tight and not able to be loosened without tools. Upon close inspection, they show no loose play or excessive wear (CPSC 2.5.2). Equipment is free of rust and chipping paint. Equipment is free of sharp no loose play or excessive wear (CPSC 2.5.2). Equipment is free of rust and chipping paint. Equipment is free of sharp edges, splinters or rough surfaces and show no excessive wear. Ropes, chains, and cables have not frayed or worn out. Equipment has not shifted or become bent. There is no corrosion or visible rotting at points where equipment comes into contact with ground surface (CPSC 7.2, 8.1) No components are missing. All parts of the equipment are present and in good working order with no loose play or excessive wear in moving parts. (CPSC 7.2, 8.1) Hanggrips are between 0.95" and 1.55" in diameter. (CPSC 10.2.1) Footings for equipment are stable and buried below ground level or covered by surfacing materials, (CPSC 9.7) Equipment is free of any litter or debris (CSPC 7.2)

Compliant

7.1.14. Protrusions: (CPSC 3.2, ASTM 6.3). No components fail protrusion test. Nuts, bolts and screws are recessed, covered or sanded smooth and level.

Compliant

7.1.15. Is shade provided over the playground area?



Compliant

7.1.16. The height of transfer platforms is between 11"-18"



7.2: Age / Size Appropriateness Design

Compliant

7.2.1. The play area has signs that inform users of intended user age group. (CPSC 2.2.6).
DISCLOSURE- Stickers on the unit in place of the sign are acceptable but can be easily removed which is why permanent signs are recommended



7.3: Climbing Equipment

N/A

7.3.1. Flexible access equipment anchoring devices are below the base of the minimum required depth of the protective surface. (CPSC 12.1.3, ASTM 7.2.2.2)

Non-Compliant 7.3.2. Handrails and handholds stay in place when grasped.

*This is a priority Three issue. (Non-compliant safety concern that is likely to cause a minor (non-disabling) injury. Condition should be corrected when time permits.)
Pinch points on rubber flex climber*

None - null - Handhold is damaged and should be replaced



7.4: Playground Protective Surface

Non-Compliant 7.4.1. All elevated play equipment (slides, swings, bridges, seesaws, climbing apparatus, etc.) has proper depth of impact-absorbing material underneath the structure. Refer to CPSC and ASTM F1487-07 and ASTM 1292-04 for specifications on conforming protective surface type, critical fall heights and how far surfacing should extend from structure. **PARKPRO TEK CANNOT GUARANTEE SURFACING IS COMPLIANT WITHOUT SURFACE IMPACT TESTING WHICH IS HIGHLY RECOMMENDED FOR EVERY SITE**

*This is a priority Two issue. (Non-compliant safety concern that may result in temporary disability. Condition should be corrected as soon as possible.)
Rubber damaged. Loose fill at 5"*



Recommended 7.4.2. Surfaces are inspected at least monthly and raked to prevent them from becoming packed down and to remove hidden hazards (e.g. litter, sharp objects, animal feces).

Compliant 7.4.3. Standing water is not found within any of the use zones.

Compliant 7.4.4. For Equipment installed after 1995, manufacturers sign attached to equipment stating equipment must be installed over impact absorbing surface . (ASTM 14.4.1.3)

7.5: Slides

Compliant 7.5.1. If the slide is made in several pieces, the slide surface has no gaps or rough edges at the top of the slide or at section seams that could entangle clothing or trap foreign material (CPSC 12.4.3, 12.4.4)

N/A 7.5.2. For slides 4 high or less and designed for 2-5 year olds, the slide exit height does not exceed 11" above the protective surfacing material. (ASTM 8.5.5.3 CPSC 12.4.5)

Compliant 7.5.3. For slides greater than 4' high, designed for 5-12 year olds, the slide exit height is between 7" and 15" above the protective surfacing material. (ASTM 8.5.5.3 CPSC 12.4.5)



Compliant 7.5.4. The slide is free of obstructions throughout the use zone.

Compliant 7.5.5. If the slide is made in one unitary piece, the slide surface has no gaps or rough edges throughout that could entangle clothing or trap foreign material (CPSC 12.4.3, 12.4.4)

7.6: Swings

N/A 7.6.1. Hardware is compliant with no issues present.

N/A 7.6.2. Swing hangers are spaced wider than seats, not less than 20. (ASTM 8.6.1.5)

N/A 7.6.3. There are no open "S" hooks (openings greater than or equal to 0.04"). CPSC 5.3.8.1

N/A 7.6.4. Swing surfacing is in good condition.

N/A 7.6.5. Swing seats are in good condition.

Non-Compliant 7.6.6. Hardware is compliant with no issues present.

*This is a priority One issue. (Non-compliant safety concern that may result in permanent disability, loss of life or body part.
Condition should be corrected immediately.)
Extreme wear on hangers and need replacement*



N/A 7.6.7. Swing hangers are spaced wider than seats, not less than 20". (ASTM 8.6.1.5)

N/A 7.6.8. Swing hangers are spaced wider than seats, not less than 20. (ASTM 8.6.1.5)

Compliant 7.6.9. Vertical distance is at least 16" between underside of occupied seat and protective surface. (5-12 equipment-ASTM 8.6.2.5)

Compliant 7.6.10. There are no open "S" hooks (openings greater than or equal to 0.04"). CPSC 5.3.8.1

N/A 7.6.11. Vertical distance is at least 12" between underside of occupied seat and protective surface (2-5 Equipment-ASTM 8.6.2.5)

Non-Compliant 7.6.12. Swing surfacing is in good condition.

This is a priority One issue. (Non-compliant safety concern that may result in permanent disability, loss of life or body part.

Condition should be corrected immediately.)

Loose fill at 3.75". Rubber surfacing has missing sections

CPSC - 2.4.2.1 - Rubber surfacing is in need of patch repairs

CPSC - 2.4 - The surfacing under and around playground equipment is one of the most important factors in reducing the likelihood of life

CPSC - 2.4.2.2 - Loose-fill material is not an adequate depth and should be refilled to remain compliant



Compliant 7.6.13. There are no open "S" hooks (openings greater than or equal to 0.04"). CPSC 5.3.8.1

Non-Compliant 7.6.14. Swing seats are in good condition.

This is a priority One issue. (Non-compliant safety concern that may result in permanent disability, loss of life or body part.

Condition should be corrected immediately.)

Missing seat



Compliant 7.6.15. Swings are located away from circulation paths (a distance at least equal to the equipment use zone and an additional safety factor for circulation, with this area free of any obstructions) and near the periphery of the playground.

Non-Compliant 7.6.16. Swing hangers are spaced wider than seats, not less than 20". (ASTM 8.6.1.5)

This is a priority Three issue. (Non-compliant safety concern that is likely to cause a minor (non-disabling) injury. Condition should be corrected when time permits.)

Chains too close together



Compliant	7.6.17. Vertical distance is at least 16" between underside of occupied seat and protective surface. (5-12 equipment-ASTM 8.6.2.5)
<hr/>	
N/A	7.6.18. Vertical distance is at least 12" between underside of occupied seat and protective surface (2-5 Equipment-ASTM 8.6.2.5)
<hr/>	
Compliant	7.6.19. There are no open "S" hooks (openings greater than or equal to 0.04"). CPSC 5.3.8.1
<hr/>	
Compliant	7.6.20. Swings are located away from circulation paths (a distance at least equal to the equipment use zone and an additional safety factor for circulation, with this area free of any obstructions) and near the periphery of the playground.

7.7: Use Zone

Compliant	7.7.1. The use zone for stationary play equipment shall extend no less than 72 in. (1830 mm) from all sides of the play structure.
<hr/>	
Compliant	7.7.2. There shall be a use zone for each play structure which shall consist of obstacle-free surfacing that conforms to Specification F1292 appropriate for the fall height of the equipment.

8: Playground Area - Volente Hills Park

8.1: General Playground Concerns

Compliant	8.1.3. The playground can be accessed safely by a sidewalk that is free of standing water, sand, pea gravel and low (7'-0" minimum) hanging branches.
-----------	---

Compliant 8.1.4. Playground has only manufacturer approved parts and pieces unless specifically documented by original manufacturer.

N/A 8.1.5. If needed, suitable barrier (fence) is provided for border concerns within 200' of playground edge

Compliant 8.1.6. Signs give information about regulations on the use of the playground (hours, pets, specific rules, etc.), name & phone number of playground owner (to report problems). Age appropriateness of equipment. (CPSC 2.2.6)



Compliant 8.1.7. Signs on all bordering roads advise motorists that a playground is nearby.

Compliant 8.1.8. Poisonous plants are removed from the play area.

Compliant 8.1.9. The play area is free of inappropriate materials or chemicals.

Compliant 8.1.10. The play area is visible to deter inappropriate behavior. (CPSC 2.2.5)

Compliant 8.1.11. Crush and shear points: (CSPS 3.1, ASTM 6.2). Equipment is free of sharp edges. There are no open holes in equipment forming traps (e.g. at the ends of tubes). There are no pinch, crush or shear points.

Compliant

8.1.12. Entanglement / entrapment angles (CPSC 3.2, ASTM 6.4): No more than two threads of the fastener protrude through any nut. No obstacles for protrusions project upwards from a horizontal plane extending more than 1/8" perpendicular to the plane of the initial surface. There are no open "v" entrapment angles on any part of the equipment. There are no gaps wider than 1.8" that would be cause for an entanglement hazard on any downward sloping play equipment.

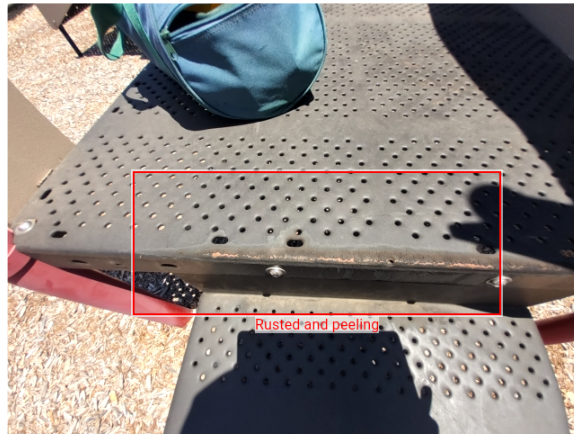


Non-Compliant

8.1.13. Hardware: Nuts and bolts are tight and not able to be loosened without tools. Upon close inspection, they show no loose play or excessive wear (CPSC 2.5.2). Equipment is free of rust and chipping paint. Equipment is free of sharp no loose play or excessive wear (CPSC 2.5.2). Equipment is free of rust and chipping paint. Equipment is free of sharp edges, splinters or rough surfaces and show no excessive wear. Ropes, chains, and cables have not frayed or worn out. Equipment has not shifted or become bent. There is no corrosion or visible rotting at points where equipment comes into contact with ground surface (CPSC 7.2, 8.1) No components are missing. All parts of the equipment are present and in good working order with no loose play or excessive wear in moving parts. (CPSC 7.2, 8.1) Hanggrips are between 0.95" and 1.55" in diameter. (CPSC 10.2.1) Footings for equipment are stable and buried below ground level or covered by surfacing materials, (CPSC 9.7) Equipment is free of any litter or debris (CSPC 7.2)

*This is a priority Two issue. (Non-compliant safety concern that may result in temporary disability. Condition should be corrected as soon as possible.)
Loose equipment. Broken bubble panel. Rusted deck exposing metal.*





Compliant 8.1.14. Protrusions: (CPSC 3.2, ASTM 6.3). No components fail protrusion test. Nuts, bolts and screws are recessed, covered or sanded smooth and level.

Recommended 8.1.15. Is shade provided over the playground area?

None - null - Recommended to keep playground from reaching extreme heat in the summer



Non-Compliant 8.1.16. The height of transfer platforms is between 11"-18"

*This is a priority Three issue. (Non-compliant safety concern that is likely to cause a minor (non-disabling) injury. Condition should be corrected when time permits.)
Transfer station at 21"*



8.2: Age / Size Appropriateness Design

Compliant

8.2.1. The play area has signs that inform users of intended user age group. (CPSC 2.2.6).
DISCLOSURE- Stickers on the unit in place of the sign are acceptable but can be easily removed which is why permanent signs are recommended

8.3: Climbing Equipment

N/A

8.3.1. Flexible access equipment anchoring devices are below the base of the minimum required depth of the protective surface. (CPSC 12.1.3, ASTM 7.2.2.2)

Non-Compliant

8.3.2. Handrails and handholds stay in place when grasped.

This is a priority Three issue. (Non-compliant safety concern that is likely to cause a minor (non-disabling) injury. Condition should be corrected when time permits.)

Loose equipment



8.4: Playground Protective Surface

Non-Compliant 8.4.1. All elevated play equipment (slides, swings, bridges, seesaws, climbing apparatus, etc.) has proper depth of impact-absorbing material underneath the structure. Refer to CPSC and ASTM F1487-07 and ASTM 1292-04 for specifications on conforming protective surface type, critical fall heights and how far surfacing should extend from structure. **PARKPRO TEK CANNOT GUARANTEE SURFACING IS COMPLIANT WITHOUT SURFACE IMPACT TESTING WHICH IS HIGHLY RECOMMENDED FOR EVERY SITE**

This is a priority One issue. (Non-compliant safety concern that may result in permanent disability, loss of life or body part.

Condition should be corrected immediately.)

Loose fill at 0" in many locations

CPSC - 2.4.2.2 - Loose-fill material is not an adequate depth and should be refilled to remain compliant
CPSC - 2.4 - The surfacing under and around playground equipment is one of the most important factors in reducing the likelihood of life-threatening head injuries



Recommended 8.4.2. Surfaces are inspected at least monthly and raked to prevent them from becoming packed down and to remove hidden hazards (e.g. litter, sharp objects, animal feces).

Compliant 8.4.3. Standing water is not found within any of the use zones.

Compliant 8.4.4. For Equipment installed after 1995, manufacturers sign attached to equipment stating equipment must be installed over impact absorbing surface . (ASTM 14.4.1.3)

8.5: Slides

N/A 8.5.1. If the slide is made in several pieces, the slide surface has no gaps or rough edges at the top of the slide or at section seams that could entangle clothing or trap foreign material (CPSC 12.4.3, 12.4.4)

N/A 8.5.2. For slides 4 high or less and designed for 2-5 year olds, the slide exit height does not exceed 11" above the protective surfacing material. (ASTM 8.5.5.3 CPSC 12.4.5)

Non-Compliant 8.5.3. For slides greater than 4' high, designed for 5-12 year olds, the slide exit height is between 7" and 15" above the protective surfacing material. (ASTM 8.5.5.3 CPSC 12.4.5)

*This is a priority Two issue. (Non-compliant safety concern that may result in temporary disability. Condition should be corrected as soon as possible.)
Slide height at 22"*

None - null - The slide height is too high but refilling the proper surfacing will fix this issue



Compliant 8.5.4. The slide is free of obstructions throughout the use zone.

Compliant 8.5.5. If the slide is made in one unitary piece, the slide surface has no gaps or rough edges throughout that could entangle clothing or trap foreign material (CPSC 12.4.3, 12.4.4)

8.6: Swings

N/A 8.6.1. Hardware is compliant with no issues present.

Compliant 8.6.2. Swing hangers are spaced wider than seats, not less than 20. (ASTM 8.6.1.5)

N/A 8.6.3. There are no open "S" hooks (openings greater than or equal to 0.04"). CPSC 5.3.8.1

Non-Compliant 8.6.4. Swing surfacing is in good condition.

*This is a priority One issue. (Non-compliant safety concern that may result in permanent disability, loss of life or body part. Condition should be corrected immediately.)
Surfacing is at zero in many locations.*



Non-Compliant 8.6.5. Swing seats are in good condition.

*This is a priority Two issue. (Non-compliant safety concern that may result in temporary disability. Condition should be corrected as soon as possible.)
Belt seats have sharp metal. Need replacement.*



Compliant 8.6.6. Swing hangers are spaced wider than seats, not less than 20". (ASTM 8.6.1.5)

Compliant 8.6.7. Vertical distance is at least 16" between underside of occupied seat and protective surface. (5-12 equipment-ASTM 8.6.2.5)

Compliant 8.6.8. Vertical distance is at least 12" between underside of occupied seat and protective surface (2-5 Equipment-ASTM 8.6.2.5)

Compliant 8.6.9. There are no open "S" hooks (openings greater than or equal to 0.04"). CPSC 5.3.8.1

Compliant 8.6.10. Swings are located away from circulation paths (a distance at least equal to the equipment use zone and an additional safety factor for circulation, with this area free of any obstructions) and near the periphery of the playground.

8.7: Use Zone

Compliant 8.7.1. The use zone for stationary play equipment shall extend no less than 72 in. (1830 mm) from all sides of the play structure.

Compliant 8.7.2. There shall be a use zone for each play structure which shall consist of obstacle-free surfacing that conforms to Specification F1292 appropriate for the fall height of the equipment.

9: Playground Area

9.1: General Playground Concerns

Compliant 9.1.3. The playground can be accessed safely by a sidewalk that is free of standing water, sand, pea gravel and low (7'-0" minimum) hanging branches.



Compliant 9.1.4. Playground has only manufacturer approved parts and pieces unless specifically documented by original manufacturer.

N/A 9.1.5. If needed, suitable barrier (fence) is provided for border concerns within 200' of playground edge

Compliant 9.1.6. Signs give information about regulations on the use of the playground (hours, pets, specific rules, etc.), name & phone number of playground owner (to report problems). Age appropriateness of equipment. (CPSC 2.2.6)



N/A 9.1.7. Signs on all bordering roads advise motorists that a playground is nearby.

Compliant 9.1.8. Poisonous plants are removed from the play area.

Recommended 9.1.9. The play area is free of inappropriate materials or chemicals.

*This is a priority Four issue. (Non-compliant safety concern whose potential to cause an injury is very minimal. Condition should be corrected if it worsens.)
Graffiti on independent slide in two locations.*

Compliant 9.1.10. The play area is visible to deter inappropriate behavior. (CPSC 2.2.5)

This is a priority Four issue. (Non-compliant safety concern whose potential to cause an injury is very minimal. Condition should be corrected if it worsens.)



Compliant 9.1.11. Crush and shear points: (CSPS 3.1, ASTM 6.2). Equipment is free of sharp edges. There are no open holes in equipment forming traps (e.g. at the ends of tubes). There are no pinch, crush or shear points.

Compliant 9.1.12. Entanglement / entrapment angles (CPSC 3.2, ASTM 6.4): No more than two threads of the fastener protrude through any nut. No obstacles for protrusions project upwards from a horizontal plane extending more than 1/8" perpendicular to the plane of the initial surface. There are no open "v" entrapment angles on any part of the equipment. There are no gaps wider than 1.8" that would be cause for an entanglement hazard on any downward sloping play equipment.

Non-Compliant 9.1.13. Hardware: Nuts and bolts are tight and not able to be loosened without tools. Upon close inspection, they show no loose play or excessive wear (CPSC 2.5.2). Equipment is free of rust and chipping paint. Equipment is free of sharp no loose play or excessive wear (CPSC 2.5.2). Equipment is free of rust and chipping paint. Equipment is free of sharp edges, splinters or rough surfaces and show no excessive wear. Ropes, chains, and cables have not frayed or worn out. Equipment has not shifted or become bent. There is no corrosion or visible rotting at points where equipment comes into contact with ground surface (CPSC 7.2, 8.1) No components are missing. All parts of the equipment are present and in good working order with no loose play or excessive wear in moving parts. (CPSC 7.2, 8.1) Hanggrips are between 0.95" and 1.55" in diameter. (CPSC 10.2.1) Footings for equipment are stable and buried below ground level or covered by surfacing materials, (CPSC 9.7) Equipment is free of any litter or debris (CPSC 7.2)

*This is a priority Three issue. (Non-compliant safety concern that is likely to cause a minor (non-disabling) injury. Condition should be corrected when time permits.)
Damaged rope needs replacement.*



Compliant 9.1.14. Protrusions: (CPSC 3.2, ASTM 6.3). No components fail protrusion test. Nuts, bolts and screws are recessed, covered or sanded smooth and level.

Recommended 9.1.15. Is shade provided over the playground area?

None - null - Recommended to keep playground from reaching extreme heat in the summer



N/A 9.1.16. The height of transfer platforms is between 11" -18"

9.2: Age / Size Appropriateness Design

Compliant 9.2.1. The play area has signs that inform users of intended user age group. (CPSC 2.2.6). *DISCLOSURE- Stickers on the unit in place of the sign are acceptable but can be easily removed which is why permanent signs are recommended*



9.3: Climbing Equipment

Compliant 9.3.1. Flexible access equipment anchoring devices are below the base of the minimum required depth of the protective surface. (CPSC 12.1.3, ASTM 7.2.2.2)



Compliant 9.3.2. Handrails and handholds stay in place when grasped.

9.4: Playground Protective Surface

Non-Compliant 9.4.1. All elevated play equipment (slides, swings, bridges, seesaws, climbing apparatus, etc.) has proper depth of impact-absorbing material underneath the structure. Refer to CPSC and ASTM F1487-07 and ASTM 1292-04 for specifications on conforming protective surface type, critical fall heights and how far surfacing should extend from structure. PARKPRO TEK CANNOT GUARANTEE SURFACING IS COMPLIANT WITHOUT SURFACE IMPACT TESTING WHICH IS HIGHLY RECOMMENDED FOR EVERY SITE

This is a priority One issue. (Non-compliant safety concern that may result in permanent disability, loss of life or body part.

Condition should be corrected immediately.)

Surfacing at 3"



Recommended 9.4.2. Surfaces are inspected at least monthly and raked to prevent them from becoming packed down and to remove hidden hazards (e.g. litter, sharp objects, animal feces).

Compliant 9.4.3. Standing water is not found within any of the use zones.

Compliant 9.4.4. For Equipment installed after 1995, manufacturers sign attached to equipment stating equipment must be installed over impact absorbing surface . (ASTM 14.4.1.3)

9.5: Slides

Compliant 9.5.1. If the slide is made in several pieces, the slide surface has no gaps or rough edges at the top of the slide or at section seams that could entangle clothing or trap foreign material (CPSC 12.4.3, 12.4.4)

N/A 9.5.2. For slides 4' high or less and designed for 2-5 year olds, the slide exit height does not exceed 11" above the protective surfacing material. (ASTM 8.5.5.3 CPSC 12.4.5)

Non-Compliant 9.5.3. For slides greater than 4' high, designed for 5-12 year olds, the slide exit height is between 7" and 15" above the protective surfacing material. (ASTM 8.5.5.3 CPSC 12.4.5)

*This is a priority Two issue. (Non-compliant safety concern that may result in temporary disability. Condition should be corrected as soon as possible.)
Connected slide is at 20"*



Compliant 9.5.4. The slide is free of obstructions throughout the use zone.

Compliant 9.5.5. If the slide is made in one unitary piece, the slide surface has no gaps or rough edges throughout that could entangle clothing or trap foreign material (CPSC 12.4.3, 12.4.4)

9.6: Use Zone

Compliant 9.6.1. The use zone for stationary play equipment shall extend no less than 72 in. (1830 mm) from all sides of the play structure.

Compliant 9.6.2. There shall be a use zone for each play structure which shall consist of obstacle-free surfacing that conforms to Specification F1292 appropriate for the fall height of the equipment.

10: Playground Area - Sun Chase

10.1: General Playground Concerns

Compliant 10.1.3. The playground can be accessed safely by a sidewalk that is free of standing water, sand, pea gravel and low (7'-0" minimum) hanging branches.

Recommended 10.1.4. Playground has only manufacturer approved parts and pieces unless specifically documented by original manufacturer.

Some of the parts do not seem commercially safe. Would need to see the install documents to ensure safety.

Non-Compliant 10.1.5. If needed, suitable barrier (fence) is provided for border concerns within 200' of playground edge

*This is a priority Two issue. (Non-compliant safety concern that may result in temporary disability. Condition should be corrected as soon as possible.)
Playground less than 100' from road.*

F2049 - 1 - Standard guide for Fences/Barriers for public, commercial, and multi-family residential use outdoor play areas
F2049 - 8.3 - Level II the hazard is 30 ft up to 100 ft from play equipment or its use zone
F2049 - 1.3 - This specification does not choose the product components for the fence system, the choice of which should be made by the operators of the play space and their specification writers or drafters based upon their determination of the merits of the products that could be used.



Recommended 10.1.6. Signs give information about regulations on the use of the playground (hours, pets, specific rules, etc.), name & phone number of playground owner (to report problems). Age appropriateness of equipment. (CPSC 2.2.6)

Recommended 10.1.7. Signs on all bordering roads advise motorists that a playground is nearby.

Compliant 10.1.8. Poisonous plants are removed from the play area.

Compliant 10.1.9. The play area is free of inappropriate materials or chemicals.

Compliant 10.1.10. The play area is visible to deter inappropriate behavior. (CPSC 2.2.5)

Compliant 10.1.11. Crush and shear points: (CSPS 3.1, ASTM 6.2). Equipment is free of sharp edges. There are no open holes in equipment forming traps (e.g. at the ends of tubes). There are no pinch, crush or shear points.

Non-Compliant 10.1.12. Entanglement / entrapment angles (CPS 3.2, ASTM 6.4): No more than two threads of the fastener protrude through any nut. No obstacles for protrusions project upwards from a horizontal plane extending more than 1/8" perpendicular to the plane of the initial surface. There are no open "v" entrapment angles on any part of the equipment. There are no gaps wider than 1.8" that would be cause for an entrapment hazard on any downward sloping play equipment.

This is a priority One issue. (Non-compliant safety concern that may result in permanent disability, loss of life or body part.

Condition should be corrected immediately.)

Entanglement and entrapment hazards on both stairs. Railing has an entrapment hazard.

ASTM - 6.4 - There shall be no entanglement hazards on public play equipment.

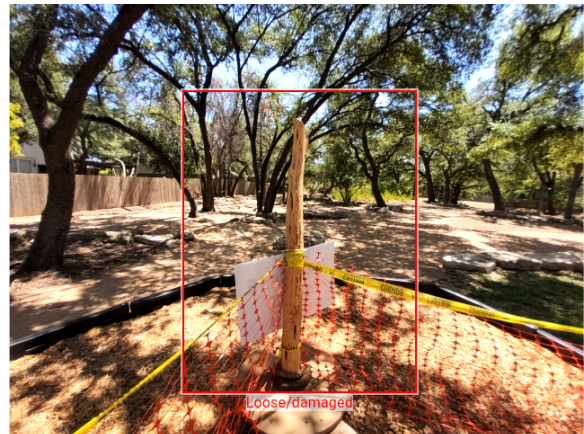


Non-Compliant 10.1.13. Hardware: Nuts and bolts are tight and not able to be loosened without tools. Upon close inspection, they show no loose play or excessive wear (CPSC 2.5.2). Equipment is free of rust and chipping paint. Equipment is free of sharp no loose play or excessive wear (CPSC 2.5.2). Equipment is free of rust and chipping paint. Equipment is free of sharp edges, splinters or rough surfaces and show no excessive wear. Ropes, chains, and cables have not frayed or worn out. Equipment has not shifted or become bent. There is no corrosion or visible rotting at points where equipment comes into contact with ground surface (CPSC 7.2, 8.1) No components are missing. All parts of the equipment are present and in good working order with no loose play or excessive wear in moving parts. (CPSC 7.2, 8.1) Hanggrips are between 0.95" and 1.55" in diameter. (CPSC 10.2.1) Footings for equipment are stable and buried below ground level or covered by surfacing materials, (CPSC 9.7) Equipment is free of any litter or debris (CSPC 7.2)

This is a priority One issue. (Non-compliant safety concern that may result in permanent disability, loss of life or body part.

Condition should be corrected immediately.)

Both sets of stairs show minimal support and are loose. Play feature is not set in ground. Damaged/loose pole.



Compliant 10.1.14. Protrusions: (CPSC 3.2, ASTM 6.3). No components fail protrusion test. Nuts, bolts and screws are recessed, covered or sanded smooth and level.

Compliant

10.1.15. Is shade provided over the playground area?



N/A

10.1.16. The height of transfer platforms is between 11" -18"

10.2: Age / Size Appropriateness Design

Recommended

10.2.1. The play area has signs that inform users of intended user age group. (CPSC 2.2.6).
DISCLOSURE- Stickers on the unit in place of the sign are acceptable but can be easily removed which is why permanent signs are recommended

10.3: Playground Protective Surface

Compliant

10.3.1. All elevated play equipment (slides, swings, bridges, seesaws, climbing apparatus, etc.) has proper depth of impact-absorbing material underneath the structure. Refer to CPSC and ASTM F1487-07 and ASTM 1292-04 for specifications on conforming protective surface type, critical fall heights and how far surfacing should extend from structure. **PARKPRO TEK CANNOT GUARANTEE SURFACING IS COMPLIANT WITHOUT SURFACE IMPACT TESTING WHICH IS HIGHLY RECOMMENDED FOR EVERY SITE**

Surfacing at 10.5"



Recommended

10.3.2. Surfaces are inspected at least monthly and raked to prevent them from becoming packed down and to remove hidden hazards (e.g. litter, sharp objects, animal feces).

Compliant 10.3.3. Standing water is not found within any of the use zones.

Compliant 10.3.4. For Equipment installed after 1995, manufacturers sign attached to equipment stating equipment must be installed over impact absorbing surface . (ASTM 14.4.1.3)

10.4: Slides

N/A 10.4.1. If the slide is made in several pieces, the slide surface has no gaps or rough edges at the top of the slide or at section seams that could entangle clothing or trap foreign material (CPSC 12.4.3, 12.4.4)

N/A 10.4.2. For slides 4' high or less and designed for 2-5 year olds, the slide exit height does not exceed 11" above the protective surfacing material. (ASTM 8.5.5.3 CPSC 12.4.5)

Compliant 10.4.3. For slides greater than 4' high, designed for 5-12 year olds, the slide exit height is between 7" and 15" above the protective surfacing material. (ASTM 8.5.5.3 CPSC 12.4.5)

Non-Compliant 10.4.4. The slide is free of obstructions throughout the use zone.

This is a priority One issue. (Non-compliant safety concern that may result in permanent disability, loss of life or body part.)

Condition should be corrected immediately.)

Railing is in the use zone of the slides.





Compliant 10.4.5. If the slide is made in one unitary piece, the slide surface has no gaps or rough edges throughout that could entangle clothing or trap foreign material (CPSC 12.4.3, 12.4.4)

10.5: Use Zone

Compliant 10.5.1. The use zone for stationary play equipment shall extend no less than 72 in. (1830 mm) from all sides of the play structure.

Compliant 10.5.2. There shall be a use zone for each play structure which shall consist of obstacle-free surfacing that conforms to Specification F1292 appropriate for the fall height of the equipment.

11: Playground Area - Madeline Loop Pond

11.1: General Playground Concerns

Compliant 11.1.3. The playground can be accessed safely by a sidewalk that is free of standing water, sand, pea gravel and low (7'-0" minimum) hanging branches.



Compliant 11.1.4. Playground has only manufacturer approved parts and pieces unless specifically documented by original manufacturer.

N/A 11.1.5. If needed, suitable barrier (fence) is provided for border concerns within 200' of playground edge

Compliant 11.1.6. Signs give information about regulations on the use of the playground (hours, pets, specific rules, etc.), name & phone number of playground owner (to report problems). Age appropriateness of equipment. (CPSC 2.2.6)



N/A 11.1.7. Signs on all bordering roads advise motorists that a playground is nearby.

Compliant 11.1.8. Poisonous plants are removed from the play area.

Compliant 11.1.9. The play area is free of inappropriate materials or chemicals.

Compliant 11.1.10. The play area is visible to deter inappropriate behavior. (CPSC 2.2.5)

Compliant 11.1.11. Crush and shear points: (CSPS 3.1, ASTM 6.2). Equipment is free of sharp edges. There are no open holes in equipment forming traps (e.g. at the ends of tubes). There are no pinch, crush or shear points.

Compliant 11.1.12. Entanglement / entrapment angles (CPSC 3.2, ASTM 6.4): No more than two threads of the fastener protrude through any nut. No obstacles for protrusions project upwards from a horizontal plane extending more than 1/8" perpendicular to the plane of the initial surface. There are no open "v" entrapment angles on any part of the equipment. There are no gaps wider than 1.8" that would be cause for an entanglement hazard on any downward sloping play equipment.

Compliant

11.1.13. Hardware: Nuts and bolts are tight and not able to be loosened without tools. Upon close inspection, they show no loose play or excessive wear (CPSC 2.5.2). Equipment is free of rust and chipping paint. Equipment is free of sharp no loose play or excessive wear (CPSC 2.5.2). Equipment is free of rust and chipping paint. Equipment is free of sharp edges, splinters or rough surfaces and show no excessive wear. Ropes, chains, and cables have not frayed or worn out. Equipment has not shifted or become bent. There is no corrosion or visible rotting at points where equipment comes into contact with ground surface (CPSC 7.2, 8.1) No components are missing. All parts of the equipment are present and in good working order with no loose play or excessive wear in moving parts. (CPSC 7.2, 8.1) Hanggrips are between 0.95" and 1.55" in diameter. (CPSC 10.2.1) Footings for equipment are stable and buried below ground level or covered by surfacing materials, (CPSC 9.7) Equipment is free of any litter or debris (CPSC 7.2)



Compliant

11.1.14. Protrusions: (CPSC 3.2, ASTM 6.3). No components fail protrusion test. Nuts, bolts and screws are recessed, covered or sanded smooth and level.



Compliant 11.1.15. Is shade provided over the playground area?

N/A 11.1.16. The height of transfer platforms is between 11" -18"

12: Playground Area - Hatch Pond Park

12.1: General Playground Concerns

Compliant 12.1.17. The playground can be accessed safely by a sidewalk that is free of standing water, sand, pea gravel and low (7'-0" minimum) hanging branches.



Compliant 12.1.18. Playground has only manufacturer approved parts and pieces unless specifically documented by original manufacturer.

Compliant 12.1.19. If needed, suitable barrier (fence) is provided for border concerns within 200' of playground edge

Recommended 12.1.20. Signs give information about regulations on the use of the playground (hours, pets, specific rules, etc.), name & phone number of playground owner (to report problems). Age appropriateness of equipment. (CPSC 2.2.6)

N/A 12.1.21. Signs on all bordering roads advise motorists that a playground is nearby.

Compliant 12.1.22. Poisonous plants are removed from the play area.

Compliant 12.1.23. The play area is free of inappropriate materials or chemicals.

Compliant 12.1.24. The play area is visible to deter inappropriate behavior. (CPSC 2.2.5)

Compliant 12.1.25. Crush and shear points: (CSPS 3.1, ASTM 6.2). Equipment is free of sharp edges. There are no open holes in equipment forming traps (e.g. at the ends of tubes). There are no pinch, crush or shear points.

Compliant 12.1.26. Entanglement / entrapment angles (CPSC 3.2, ASTM 6.4): No more than two threads of the fastener protrude through any nut. No obstacles for protrusions project upwards from a horizontal plane extending more than 1/8" perpendicular to the plane of the initial surface. There are no open "v" entrapment angles on any part of the equipment. There are no gaps wider than 1.8" that would be cause for an entanglement hazard on any downward sloping play equipment.



Compliant

12.1.27. Hardware: Nuts and bolts are tight and not able to be loosened without tools. Upon close inspection, they show no loose play or excessive wear (CPSC 2.5.2). Equipment is free of rust and chipping paint. Equipment is free of sharp no loose play or excessive wear (CPSC 2.5.2). Equipment is free of rust and chipping paint. Equipment is free of sharp edges, splinters or rough surfaces and show no excessive wear. Ropes, chains, and cables have not frayed or worn out. Equipment has not shifted or become bent. There is no corrosion or visible rotting at points where equipment comes into contact with ground surface (CPSC 7.2, 8.1) No components are missing. All parts of the equipment are present and in good working order with no loose play or excessive wear in moving parts. (CPSC 7.2, 8.1) Hanggrips are between 0.95" and 1.55" in diameter. (CPSC 10.2.1) Footings for equipment are stable and buried below ground level or covered by surfacing materials, (CPSC 9.7) Equipment is free of any litter or debris (CSPC 7.2)



Compliant

12.1.28. Protrusions: (CPSC 3.2, ASTM 6.3). No components fail protrusion test. Nuts, bolts and screws are recessed, covered or sanded smooth and level.

Compliant

12.1.29. Is shade provided over the playground area?



N/A 12.1.30. The height of transfer platforms is between 11" -18"

12.2: Age / Size Appropriateness Design

Compliant 12.2.1. The play area has signs that inform users of intended user age group. (CPSC 2.2.6).
DISCLOSURE- Stickers on the unit in place of the sign are acceptable but can be easily removed which is why permanent signs are recommended



12.3: Climbing Equipment

Recommended 12.3.1. Flexible access equipment anchoring devices are below the base of the minimum required depth of the protective surface. (CPSC 12.1.3, ASTM 7.2.2.2)

Compliant 12.3.2. Handrails and handholds stay in place when grasped.

12.4: Playground Protective Surface

Non-Compliant 12.4.1. All elevated play equipment (slides, swings, bridges, seesaws, climbing apparatus, etc.) has proper depth of impact-absorbing material underneath the structure. Refer to CPSC and ASTM F1487-07 and ASTM 1292-04 for specifications on conforming protective surface type, critical fall heights and how far surfacing should extend from structure. **PARKPRO TEK CANNOT GUARANTEE SURFACING IS COMPLIANT WITHOUT SURFACE IMPACT TESTING WHICH IS HIGHLY RECOMMENDED FOR EVERY SITE**

*This is a priority Two issue. (Non-compliant safety concern that may result in temporary disability. Condition should be corrected as soon as possible.)
Surfacing at 3.5"*

CPSC - 2.4.2.2 - Loose-fill material is not an adequate depth and should be refilled to remain compliant



Recommended 12.4.2. Surfaces are inspected at least monthly and raked to prevent them from becoming packed down and to remove hidden hazards (e.g. litter, sharp objects, animal feces).

Compliant 12.4.3. Standing water is not found within any of the use zones.

Compliant 12.4.4. For Equipment installed after 1995, manufacturers sign attached to equipment stating equipment must be installed over impact absorbing surface . (ASTM 14.4.1.3)

12.5: Use Zone

Compliant 12.5.1. The use zone for stationary play equipment shall extend no less than 72 in. (1830 mm) from all sides of the play structure.

Compliant 12.5.2. There shall be a use zone for each play structure which shall consist of obstacle-free surfacing that conforms to Specification F1292 appropriate for the fall height of the equipment.

12.6: Swings

Compliant 12.6.1. Hardware is compliant with no issues present.

Compliant 12.6.2. Swing hangers are spaced wider than seats, not less than 20. (ASTM 8.6.1.5)

Compliant 12.6.3. There are no open "S" hooks (openings greater than or equal to 0.04"). CPSC 5.3.8.1

Non-Compliant 12.6.4. Swing surfacing is in good condition.

*This is a priority One issue. (Non-compliant safety concern that may result in permanent disability, loss of life or body part.
Condition should be corrected immediately.)
Zero under swings*



Non-Compliant 12.6.5. Swing seats are in good condition.

*This is a priority Three issue. (Non-compliant safety concern that is likely to cause a minor (non-disabling) injury.
Condition should be corrected when time permits.)
Missing safety strap*



Compliant 12.6.6. Swing hangers are spaced wider than seats, not less than 20". (ASTM 8.6.1.5)

Compliant	12.6.7. Vertical distance is at least 16" between underside of occupied seat and protective surface. (5-12 equipment-ASTM 8.6.2.5)
N/A	12.6.8. Vertical distance is at least 12" between underside of occupied seat and protective surface (2-5 Equipment-ASTM 8.6.2.5)
Compliant	12.6.9. There are no open "S" hooks (openings greater than or equal to 0.04"). CPSC 5.3.8.1
Compliant	12.6.10. Swings are located away from circulation paths (a distance at least equal to the equipment use zone and an additional safety factor for circulation, with this area free of any obstructions) and near the periphery of the playground.

13: Playground Area - Anderson Mill Pond Park

13.1: Swings

Recommended	13.1.11. Hardware is compliant with no issues present. <i>handicap seat has no safety belt.</i>
Compliant	13.1.12. Swing hangers are spaced wider than seats, not less than 20. (ASTM 8.6.1.5)
Compliant	13.1.13. There are no open "S" hooks (openings greater than or equal to 0.04"). CPSC 5.3.8.1
Non-Compliant	13.1.14. Swing surfacing is in good condition. <i>This is a priority One issue. (Non-compliant safety concern that may result in permanent disability, loss of life or body part. Condition should be corrected immediately.) Loose fill at 5"</i> CPSC - 2.4.2.2 - Loose-fill material is not an adequate depth and should be refilled to remain compliant CPSC - 2.4 - The surfacing under and around playground equipment is one of the most important factors in reducing the likelihood of life-threatening head injuries



Recommended 13.1.15. Swing seats are in good condition.

Missing safety strap



Compliant 13.1.16. Swing hangers are spaced wider than seats, not less than 20". (ASTM 8.6.1.5)

Compliant 13.1.17. Vertical distance is at least 16" between underside of occupied seat and protective surface. (5-12 equipment-ASTM 8.6.2.5)

N/A 13.1.18. Vertical distance is at least 12" between underside of occupied seat and protective surface (2-5 Equipment-ASTM 8.6.2.5)

Compliant 13.1.19. There are no open "S" hooks (openings greater than or equal to 0.04"). CPSC 5.3.8.1

Compliant 13.1.20. Swings are located away from circulation paths (a distance at least equal to the equipment use zone and an additional safety factor for circulation, with this area free of any obstructions) and near the periphery of the playground.



Summary

- 1.1.3 (P4): Playground is at 192'
- 1.1.10 (P3): Non-compliant hardware on blue slide
- 1.1.11 (P2): Rusting and peeling decks, missing equipment, missing caps
- 1.3.1 (P1): Damaged rubber, loose fill at 3"
- 1.8.1 (P1): Missing and incorrectly installed hardware.
- 1.8.4 (P1): Loose fill at 0" in many locations
- 1.8.5 (P1): Damaged and missing hardware. Installed incorrectly creating entanglement
- 2.1.13 (P2): 82"
- 2.1.21 (P3): Pinch points on rubber flex climber. Missing equipment.
- 2.3.1 (P1): Loose fill at 2.75". Rubber surfacing has missing sections
- 2.6.1 (P2): Damaged sharp edges
- 2.6.4 (P1): Rubber damaged. Loose fill at 4"
- 2.6.5 (P3): Bucket seats have rust and sharp edges
- 2.8.1 (P1): Tree in use zone. Needs to be 13'. Only at 8'
- 6.4.1 (P1): Rubber damaged. Loose fill at 3"
- 6.7.1 (P1): Hangers showing signs of extreme wear and needs replacement.
- 6.7.4 (P1): Loose fill ranges from 2-4" and rubber has cracks
- 7.1.5 (P3): Road at 155'
- 7.3.2 (P3): Pinch points on rubber flex climber
- 7.4.1 (P2): Rubber damaged. Loose fill at 5"
- 7.6.6 (P1): Extreme wear on hangers and need replacement
- 7.6.12 (P1): Loose fill at 3.75". Rubber surfacing has missing sections
- 7.6.14 (P1): Missing seat
- 7.6.16 (P3): Chains too close together
- 8.1.13 (P2): Loose equipment. Broken bubble panel. Rusted deck exposing metal.
- 8.1.16 (P3): Transfer station at 21"
- 8.3.2 (P3): Loose equipment
- 8.4.1 (P1): Loose fill at 0" in many locations
- 8.5.3 (P2): Slide height at 22"
- 8.6.4 (P1): Surfacing is at zero in many locations.
- 8.6.5 (P2): Belt seats have sharp metal. Need replacement.
- 9.1.13 (P3): Damaged rope needs replacement.
- 9.4.1 (P1): Surfacing at 3"
- 9.5.3 (P2): Connected slide is at 20"
- 10.1.5 (P2): Playground less than 100' from road.
- 10.1.12 (P1): Entanglement and entrapment hazards on both stairs. Railing has an entrapment hazard.
- 10.1.13 (P1): Both sets of stairs show minimal support and are loose. Play feature is not set in ground. Damaged/loose pole.
- 10.4.4 (P1): Railing is in the use zone of the slides.
- 12.4.1 (P2): Surfacing at 3.5"
- 12.6.4 (P1): Zero under swings
- 12.6.5 (P3): Missing safety strap
- 13.1.14 (P1): Loose fill at 5"

Notes

Anderson mill west

Wasp Nest in gazebo

Fitness track bridge is showing signs of degradation. Railing is pulling away and should be addressed.

Thank you for choosing ParkPro Tek for all your inspection and maintenance needs. Please review the report for all recommended and non-compliant items.

